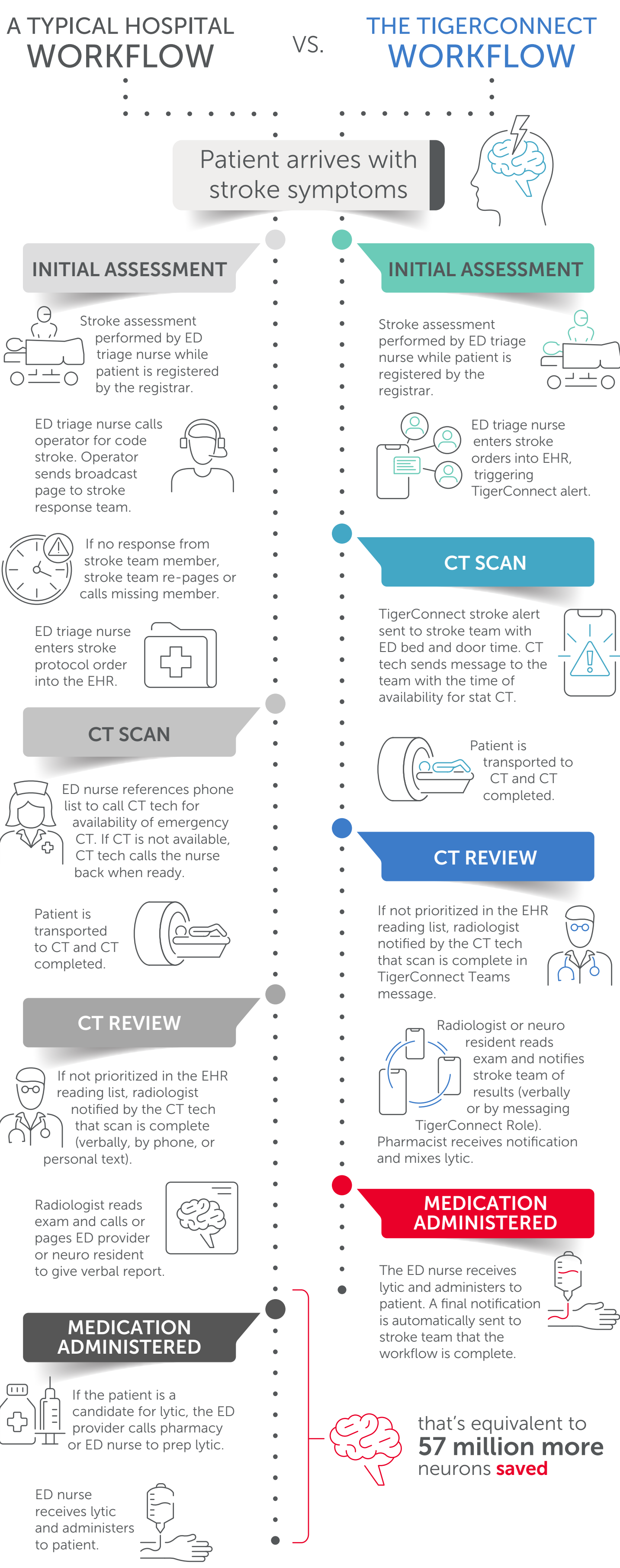


# How to Accelerate Your Stroke Response Time by Up to 50%

When a patient is having a stroke, they lose **1.9 million neurons and 14 billion synapses for every minute** that goes by before the care team can administer the lifesaving drug that stops the stroke (lytic).

With TigerConnect, **door-to-needle time is reduced to under 30 minutes**. That's a huge difference for the patient's likelihood of survival. **A 57 million neuron difference**, to be exact.



**A TYPICAL HOSPITAL WORKFLOW** **60+ Minutes** **19 Steps** **VS.** **THE TIGERCONNECT WORKFLOW** **under 30 Minutes** **9 Steps**

In time-sensitive care scenarios such as a patient experiencing a stroke, real-time communication can have a direct impact on a patient's life. Streamlining your stroke workflow using TigerConnect results in lower mortality, decreased length of stay, reduced readmissions, and improved quality of life.

For an example of how TigerConnect helps reduce door-to-needle time, download the **Baylor St. Luke's Medical Center case study**.

[Download Now >](#)